



BANDIRMA MERMER SAN. ve TİC. A.Ş.

*The source for quality
marble in  Turkey*



From Nature

bms

**BANDIRMA
MERMER**

To Art

Turkey

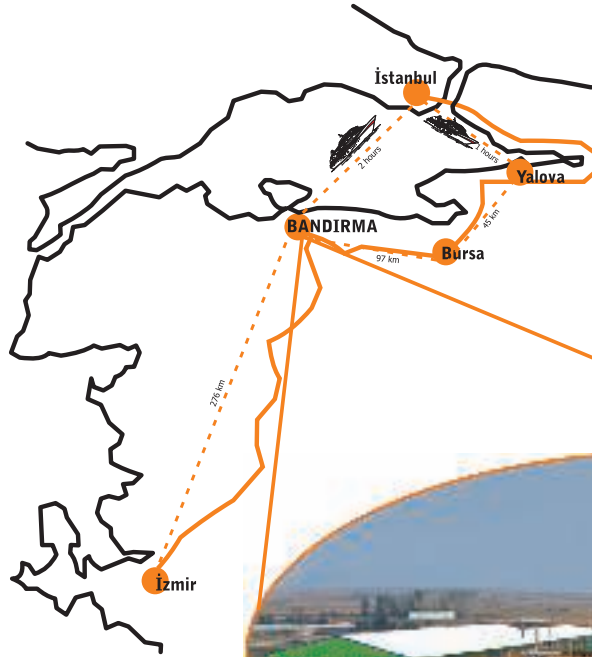




**Welcome to the land where
stones tell divine stories.**



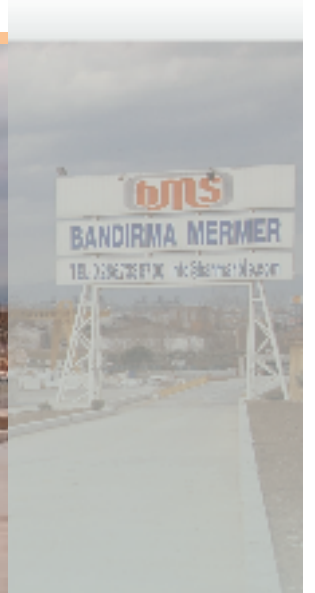
**BANDIRMA
MERMER**



Balıkesir Yolu 9. Km. Bandirma / TURKEY
Tel.: +90 266 733 87 00 Fax: +90 266 733 84 40
www.banmarble info@banmarble.com



Bandırma Marble has an engagement in the stone business since 1972 and is located Bandırma city that is just 2 hours from İstanbul / TURKEY. It owns a total area of 77.000 m2 with two different buildings coverings 4.700 m2 of it. Bandırma Marble has been experienced with marble and natural stones more than 30 years and has became one of the largest manufacturers in Turkish stone market.



Maintaining the logic of establishing our production centers in close proximity to the resources in order to minimize costs and optimize productivity, this factory has been constructed in the area of northern Turkey, nearby to big ports and near the quarries owned and developed by our Group.



**BANDIRMA
MERMER**





FACTORY FACILITIES

Gang-Saw (2)

3+12 calibrated and polishing machine

Block cutter (6)

Head cutting machine (6)

Pedrini slab polishing line

Bridge cutting machine

Slab epoxy line



**BANDIRMA
MERMER**



*Bandırma Marble is dedicated to producing highest quality with fairest price.
We can assure a strict quality control because whole our factory is equipped with
ITALIAN TECHNOLOGY and skilled craft people*



**BANDIRMA
MERMER**





Bandırma Marble manages different technical operations in its factory and present the ordered material to the customers as polished, honed, calibrated, filled, bevelled, epoxied, thumbled and brushed.



Our factories are equipped with the most modern automated tiles lines for the manufacture of standard gauged marble paving tiles

This division completes our facilities, offering a quality tile product, precisely dimensioned and calibrated to 10, 12, 15 mm thickness.



**BANDIRMA
MERMER**



FACTORY PRODUCTION CAPACITY
550.000 m²/year slabs



30 x 60
40 x 40
60 x 60
30.5 x 30.5
40.6 x 40.6
45.7 x 45.7
2 cm Slabs
3 cm Slabs

... And in all other sizes on demand



**BANDIRMA
MERMER**





Being aware of the great importance for high quality material selection, which begins at the moment quarrying, the Bandırma Marble employs the most modern extraction techniques that allow us to obtain sound and correctly squared blocks.



FACILITIES OF QUARRY

*4 pieces Volvo loader
4 pieces Truck
15 pieces diamond wire cutter
2 pieces jenerator
2 pieces excavator
and etc.....*



Desiring to supply different kinds of Turkish marbles with direct and easy selection, we are operating 5 quarries with high technology which can be supplied 35.000 m³ blocks per year, Because of wheather advantages all 5 quarries are avaliable 12 month of the year.



Our Annual block production capacity is 35.000 m³/ year.

**BANDIRMA
MERMER**



*With over 15.000 tones of stock in blocks
and 100.000 m2 (tiles, cut to size,
and slabs) wide selection of materials
we can offer immediat delivery.
We have been exporting our first quality
materials to all over the world.*



*Bandırma Marble achieves the product continuity in Slabs,
cut to size materials and the prompt delivery time.*



**BANDIRMA
MERMER**



Quality Assurance it maintains the continuity and development of this quality by the controls made at production stage done by the Quality Assurance Unit.



Packing



**BANDIRMA
MERMER**





Modern equipment for the treatment and purification of plant wastewater is installed in factory of Bandirma Marble, as our concern and care for the ecology is paramount in our production process.



Technology

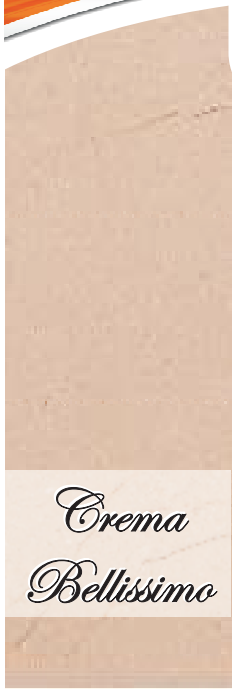
In which highest level of technology is present and which is in European standards consisting

**BANDIRMA
MERMER**





Collection



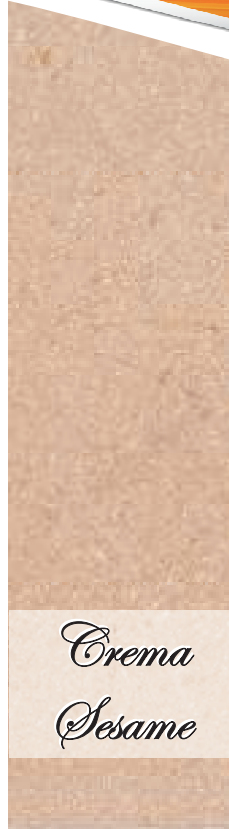
*Crema
Bellissimo*



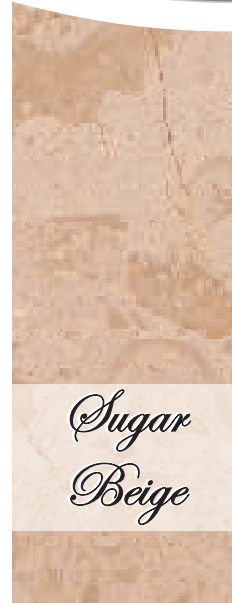
*Olive
Maron*



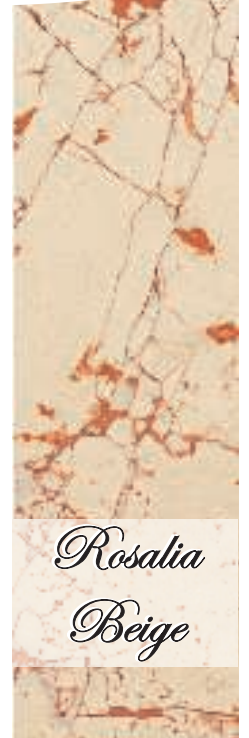
Emperador



*Crema
Sesame*



*Sugar
Beige*



*Rosalia
Beige*



*Marmara
White*



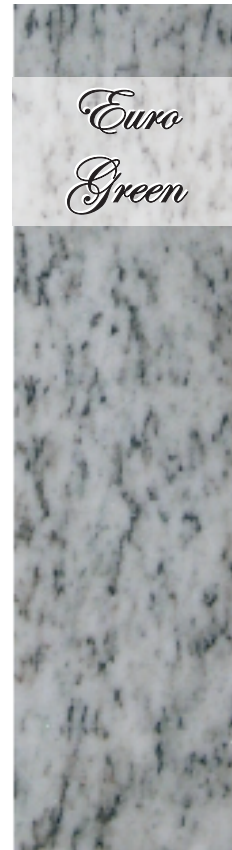
*Marmara
Equator*



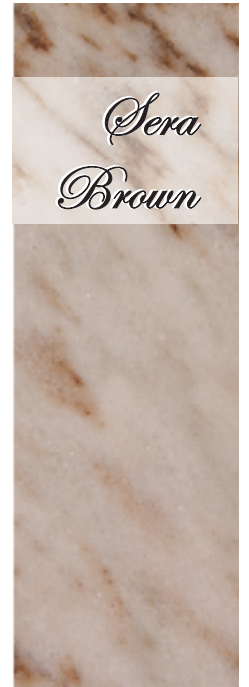
Travertine



*Golden
Crystal*



*Euro
Green*



*Sera
Brown*





Crema Bellissimo

**BANDIRMA
MERMER**



Crema Bellissimo



CREMA BELLISSIMO

Location	: Bilecik, İlyasça Köyü
Ability of Polishing	: Good
Types of products	: Block, Measured plates, tiles
Hardness(Mohs)	: 3 - 4
Unit volume by weight(gr/cm^3)	: 2,68
Density(gr/cm^3)	: 2,74
Porosity(%)	: 0,49
Compressive strenght(kgf/cm^2)	: 1.238
Strenght to Blow($\text{kgf.cm}/\text{cm}^3$)	: 4
Strenght to Bending(kgf/cm^2)	: 338
Modules Elasticity(kgf/cm^2)	: 293×10^3
Ratio of Fullness(%)	: 99
Degree of Pores(%)	: 0,70
Average Abrasion Strength($\text{cm}^3/50 \text{ cm}^2$)	: 7,72
Average tensile strength(kgf/cm^2)	: 42





Olive Maron

**BANDIRMA
MERMER**



Olive Maron



OLIVE MARON

Location	: Bursa, Karacabey, Kıranlarköyü
Ability of Polishing	: Very good
Types of products	: Block, Measured plates, tiles
Hardness(Mohs)	: 4
Unit volume by weight(gr/cm^3)	: 2,66
Density(gr/cm^3)	: 2,70
Porosity(%)	: 0,23
Compressive strenght(kgf/cm^2)	: 670
Strenght to Blow($\text{kgf}.\text{cm}/\text{cm}^3$)	: 4
Strenght to Bending(kgf/cm^2)	: 100
Modules Elasticity(kgf/cm^2)	: $7,15 \times 10^4$
Ratio of Fullness(%)	: 99
Degree of Pores(%)	: 1,1
Average Abrasion Strength($\text{cm}^3/50 \text{ cm}^2$)	: 22,3
Average tensile strength(kgf/cm^2)	: 69





Emperador

**BANDIRMA
MERMER**



Emperador



EMPERADOR

Location	: Bursa, Karacabey, Çavuşköy
Ability of Polishing	: Good
Types of products	: Block, Measured plates, tiles
Hardness(Mohs)	: 3,5
Unit volume by weight(gr/cm^3)	: 2,63
Density(gr/cm^3)	: 2,67
Porosity(%)	: 4
Compressive strenght(kgf/cm^2)	: 887
Strenght to Blow($\text{kgf.cm}/\text{cm}^3$)	: 7
Strenght to Bending(kgf/cm^2)	: 178
Modules Elasticity(kgf/cm^2)	: $30,60 \times 10^4$
Ratio of Fullness(%)	: 98,62
Degree of Pores(%)	: 1
Average Abrasion Strenght($\text{cm}^3/50 \text{ cm}^2$)	: 14,49
Average tensile strenght(kgf/cm^2)	: 195,16





Crema Sesame

**BANDIRMA
MERMER**





CREMA SESAME

Location	: Bilecik, İlyasça Köyü
Ability of Polishing	: Good
Types of products	: Block, Measured plates, tiles
Hardness(Mohs)	: 3 - 4
Unit volume by weight(gr/cm^3)	: 2,71
Density(gr/cm^3)	: 2,74
Porosity(%)	: 0,4
Compressive strenght(kgf/cm^2)	: 1.019
Strenght to Blow($\text{kgf.cm}/\text{cm}^3$)	: 2
Strenght to Bending(kgf/cm^2)	: 127
Modules Elasticity(kgf/cm^2)	: $8,29 \times 10^4$
Ratio of Fullness(%)	: 98,90
Degree of Pores(%)	: 1,1
Average Abrasion Strength($\text{cm}^3/50 \text{ cm}^2$)	: 12,20
Average tensile strength(kgf/cm^2)	: 48





Sugar Beige

**BANDIRMA
MERMER**



Sugar Beige



SUGAR BEIGE

Location	: Bilecik, İlyasçaKöyü
Ability of Polishing	: Good
Types of products	: Block, Measured plates, tiles
Hardness(Mohs)	: 3 - 4
Unit volume by weight(gr/cm^3)	: 2,68
Density(gr/cm^3)	: 2,74
Porosity(%)	: 0,49
Compressive strenght(kgf/cm^2)	: 1.238
Strenght to Blow($\text{kgf.cm}/\text{cm}^3$)	: 4
Strenght to Bending(kgf/cm^2)	: 338
Modules Elasticity(kgf/cm^2)	: 293×10^3
Ratio of Fullness(%)	: 99
Degree of Pores(%)	: 0,70
Average Abrasion Strength($\text{cm}^3/50 \text{ cm}^2$)	: 7,72
Average tensile strength(kgf/cm^2)	: 42





Rosalia Beige

**BANDIRMA
MERMER**

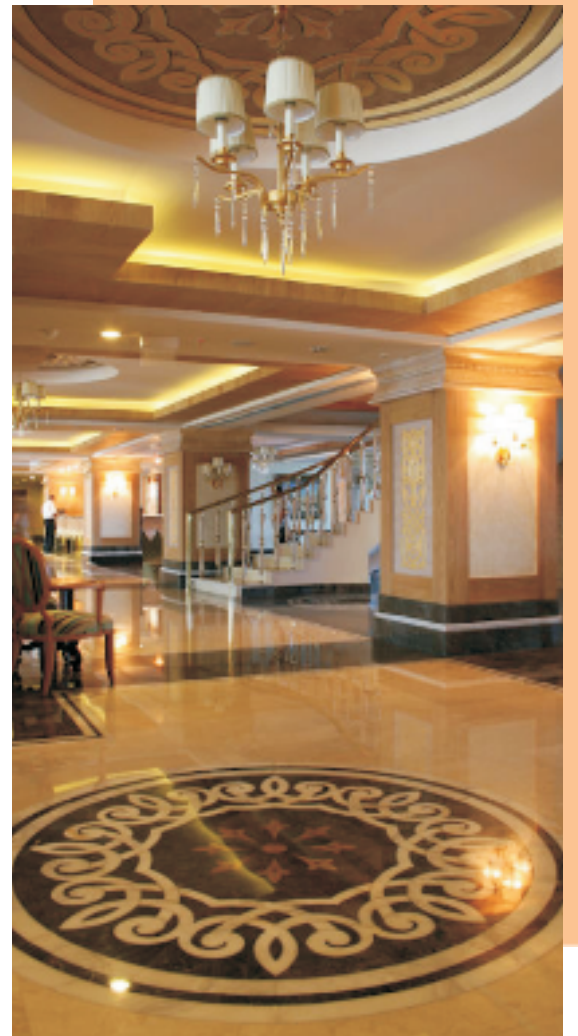


Rosalia Beige



ROSALIA BEIGE

Location	: Bilecik, Behiceköyü
Ability of Polishing	: Good
Types of products	: Block, Measured plates, tiles
Hardness(Mohs)	: 3 - 4
Unit volume by weight(gr/cm^3)	: 2,68
Density(gr/cm^3)	: 2,74
Porosity(%)	: 0,49
Compressive strenght(kgf/cm^2)	: 1.238
Strenght to Blow($\text{kgf.cm}/\text{cm}^3$)	: 4
Strenght to Bending(kgf/cm^2)	: 338
Modules Elasticity(kgf/cm^2)	: 293×10^3
Ratio of Fullness(%)	: 99
Degree of Pores(%)	: 0,70
Average Abrasion Strength($\text{cm}^3/50 \text{ cm}^2$)	: 7,72
Average tensile strength(kgf/cm^2)	: 42





Marmara White

**BANDIRMA
MERMER**

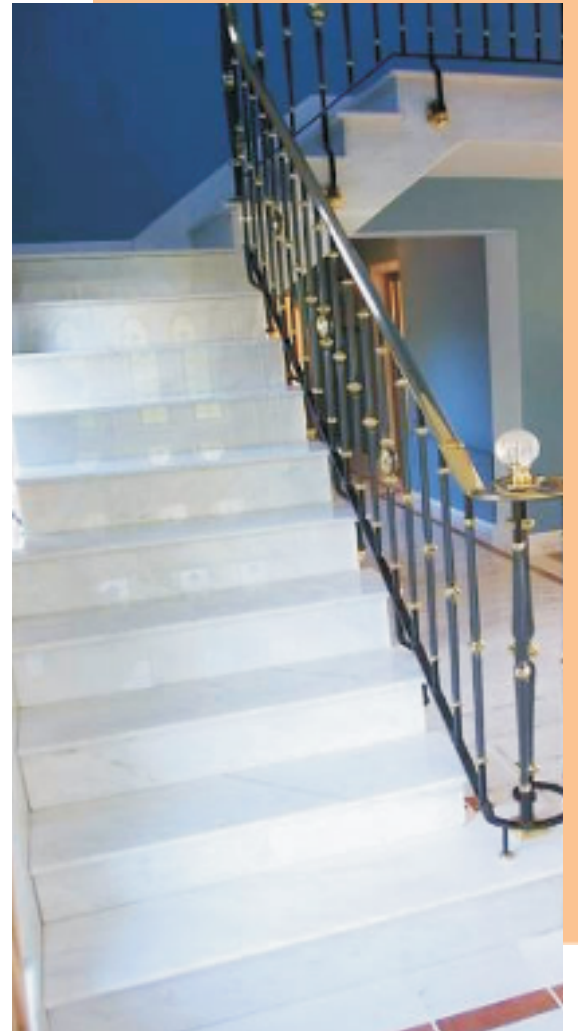


Marmara White



MARMARA WHITE

Location	: Marmara Island
Ability of Polishing	: Good
Types of products	: Block, Measured plates, tiles
Hardness(Mohs)	: 3
Unit volume by weight(gr/cm^3)	: 2,71
Density(gr/cm^3)	: 2,73
Porosity(%)	: 0,2
Compressive strenght(kgf/cm^2)	: 704
Strenght to Blow($\text{kgf.cm}/\text{cm}^3$)	: 17
Strenght to Bending(kgf/cm^2)	: 111
Modules Elasticity(kgf/cm^2)	: $5,65 \times 10^4$
Ratio of Fullness(%)	: 99,3
Degree of Pores(%)	: 0,7
Average Abrasion Strength($\text{cm}^3/50 \text{ cm}^2$)	: 29,60
Average tensile strength(kgf/cm^2)	: 41,00





Marmara Equator

**BANDIRMA
MERMER**

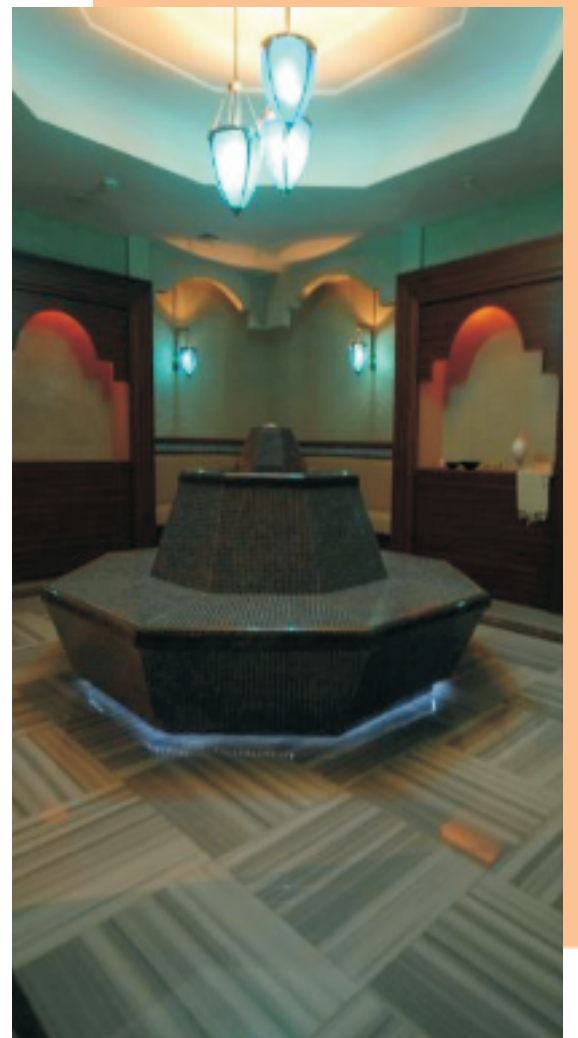


Marmara Equator



MARMARA EQUATOR

Location	: Marmara Island
Ability of Polishing	: Good
Types of products	: Block, Measured plates, tiles
Hardness(Mohs)	: 3
Unit volume by weight(gr/cm^3)	: 2,71
Density(gr/cm^3)	: 2,73
Porosity(%)	: 0,2
Compressive strenght(kgf/cm^2)	: 704
Strenght to Blow($\text{kgf.cm}/\text{cm}^3$)	: 17
Strenght to Bending(kgf/cm^2)	: 111
Modules Elasticity(kgf/cm^2)	: $5,65 \times 10^4$
Ratio of Fullness(%)	: 99,3
Degree of Pores(%)	: 0,7
Average Abrasion Strength($\text{cm}^3/50 \text{ cm}^2$)	: 29,60
Average tensile strength(kgf/cm^2)	: 41,00





Travertine

**BANDIRMA
MERMER**



Travertine



TRAVERTINE

Location	: Denizli
Ability of Polishing	: Good
Types of products	: Block, Measured plates, tiles
Hardness(Mohs)	: 3
Unit volume by weight(gr/cm^3)	: 2,50
Density(gr/cm^3)	: 2,72
Porosity(%)	: 2,3
Compressive strenght(kgf/cm^2)	: 570
Strenght to Blow($\text{kgf.cm}/\text{cm}^3$)	: 11
Strenght to Bending(kgf/cm^2)	: 108
Modules Elasticity(kgf/cm^2)	: $5,38 \times 10^4$
Ratio of Fullness(%)	: 91,9
Degree of Pores(%)	: 8,1
Average Abrasion Strength($\text{cm}^3/50 \text{ cm}^2$)	: 28,7
Average tensile strength(kgf/cm^2)	: 41





Golden Crystal

**BANDIRMA
MERMER**



Golden Crystal



GOLDEN CRYSTAL

Location	: Balıkesir, Manyas, Işıklarköyü
Ability of Polishing	: Good
Types of products	: Block, Measured plates, tiles
Hardness(Mohs)	: 3
Unit volume by weight(gr/cm^3)	: 2,71
Density(gr/cm^3)	: 2,72
Porosity(%)	: 0
Compressive strenght(kgf/cm^2)	: 421
Strenght to Blow($\text{kgf.cm}/\text{cm}^3$)	: 6
Strenght to Bending(kgf/cm^2)	: 52
Modules Elasticity(kgf/cm^2)	: $5,20 \times 10^4$
Ratio of Fullness(%)	: 99,6
Degree of Pores(%)	: 0,4
Average Abrasion Strength($\text{cm}^3/50 \text{ cm}^2$)	: 29,4
Average tensile strength(kgf/cm^2)	: 50





Euro Green

**BANDIRMA
MERMER**



Euro Green



EURO GREEN

Location	: Balıkesir, Manyas, Işıklarköyü
Ability of Polishing	: Good
Types of products	: Block, Measured plates, tiles
Hardness(Mohs)	: 3,5
Unit volume by weight(gr/cm^3)	: 2,67
Density(gr/cm^3)	: 2,69
Porosity(%)	: 4
Compressive strenght(kgf/cm^2)	: 663
Strenght to Blow($\text{kgf.cm}/\text{cm}^3$)	: 7
Strenght to Bending(kgf/cm^2)	: 52
Modules Elasticity(kgf/cm^2)	: $44,88 \times 10^4$
Ratio of Fullness(%)	: 98
Degree of Pores(%)	: 0,4
Average Abrasion Strength($\text{cm}^3/50 \text{ cm}^2$)	: 29,4
Average tensile strength(kgf/cm^2)	: 249





Sera Brown

**BANDIRMA
MERMER**



Sera Brown



SERA BROWN

Location	: Balıkesir, Manyas, Işıklarköyü
Ability of Polishing	: Good
Types of products	: Block, Measured plates, tiles
Hardness(Mohs)	: 3,5
Unit volume by weight(gr/cm^3)	: 2,67
Density(gr/cm^3)	: 2,69
Porosity(%)	: 4
Compressive strenght(kgf/cm^2)	: 663
Strenght to Blow($\text{kgf.cm}/\text{cm}^3$)	: 7
Strenght to Bending(kgf/cm^2)	: 52
Modules Elasticity(kgf/cm^2)	: $44,88 \times 10^4$
Ratio of Fullness(%)	: 98
Degree of Pores(%)	: 0,4
Average Abrasion Strength($\text{cm}^3/50 \text{ cm}^2$)	: 29,4
Average tensile strength(kgf/cm^2)	: 249





**BANDIRMA MERMER
SAN. ve TİC. A.Ş.**

Balıkesir Yolu 9. Km.
Bandırma / TURKEY
Tel.: +90 266 733 8700
Fax: +90 266 733 8440
info@banmarble.com

www.banmarble.com